



**TECHNICAL SHEET - RESIDENT EQUIPMENT – REV.06**



## SOUND

---

The venue is equipped with a front line array of four modules (two per side) and four central subwoofers placed under the stage.

Along the perimeter of the dance floor and on the stage, there are additional speakers used to reinforce the main system. In the balcony room there are also reinforcement speakers with a dedicated subwoofer.

Audio can be fed either from the stage or from the FOH. The entire system has been calibrated by a specialized technician.

The resident mixer cannot be bypassed in the signal chain. Customers can connect to the system using a left and right signal (or left and right plus mono sub) and these signals must always pass through the resident mixer. Monitor feeds must also pass through the resident mixer. No external audio systems are allowed in the venue.

## RESIDENT EQUIPMENT:

- 1 MACKIE DL16S1 Digital Mixer
- 1 SENNHEISER EW300 Wireless Microphone
- 4 Modules VH Layer112H Loud Professional
- 4 Subwoofer VH Sub218R Loud Professional
- 4 8s d&b Audiotechnik + sub Bi8 (Balcony room)
- 2 8s d&b Audiotechnik (Bar area)
- 4 12s d&b Audiotechnik (dancefloor's perimeter)
- 2 24s-d d&b Audiotechnik (Stage/Privè)

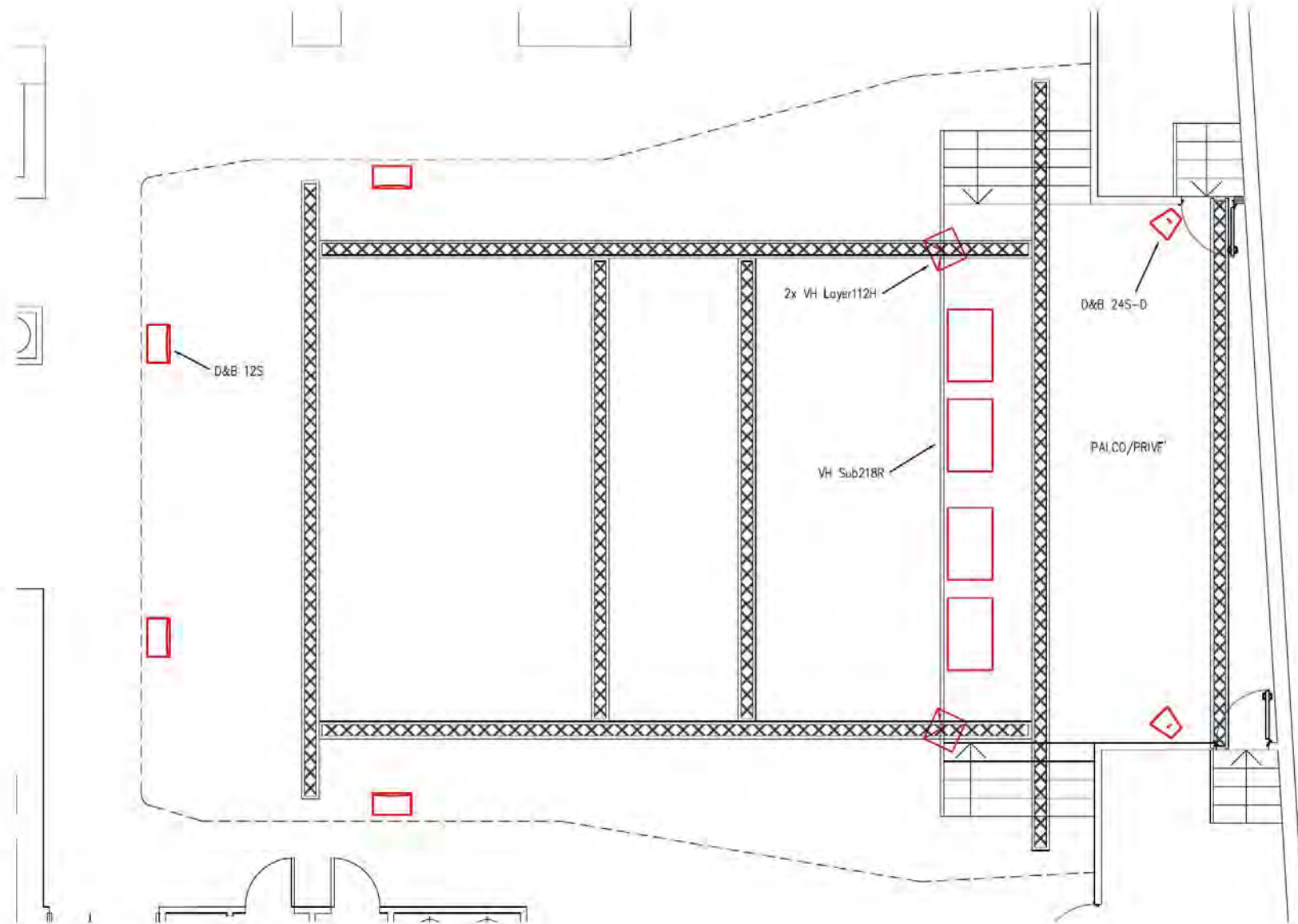
## MAX SOUND PRESSURE LEVEL:

**102 dB (A) L ASmax**

**95 dB (A) L Acq**



## SPEAKERS LAYOUT





## LIGHTS

---

The venue is equipped with a truss structure that extends from the stage to the end of the dance floor.

The stage is lit by five RGB LED PARs. As additional support, it is equipped with ten BEAM moving heads and five RGB strobe or wash units that act as backlight.

Along the perimeter of the dance floor there are six RGB WASH moving heads with zoom. In front of the audience there are six LED blinders (white and warm white) and six LED BEAM moving heads (three on each side of the stage). Four DMX lasers are also available.

All rooms in the venue feature architectural RGB LED strips, and their colors can be controlled independently. At the top center of the main room, a mirrorball motor is installed with a maximum load capacity of 35 kg.

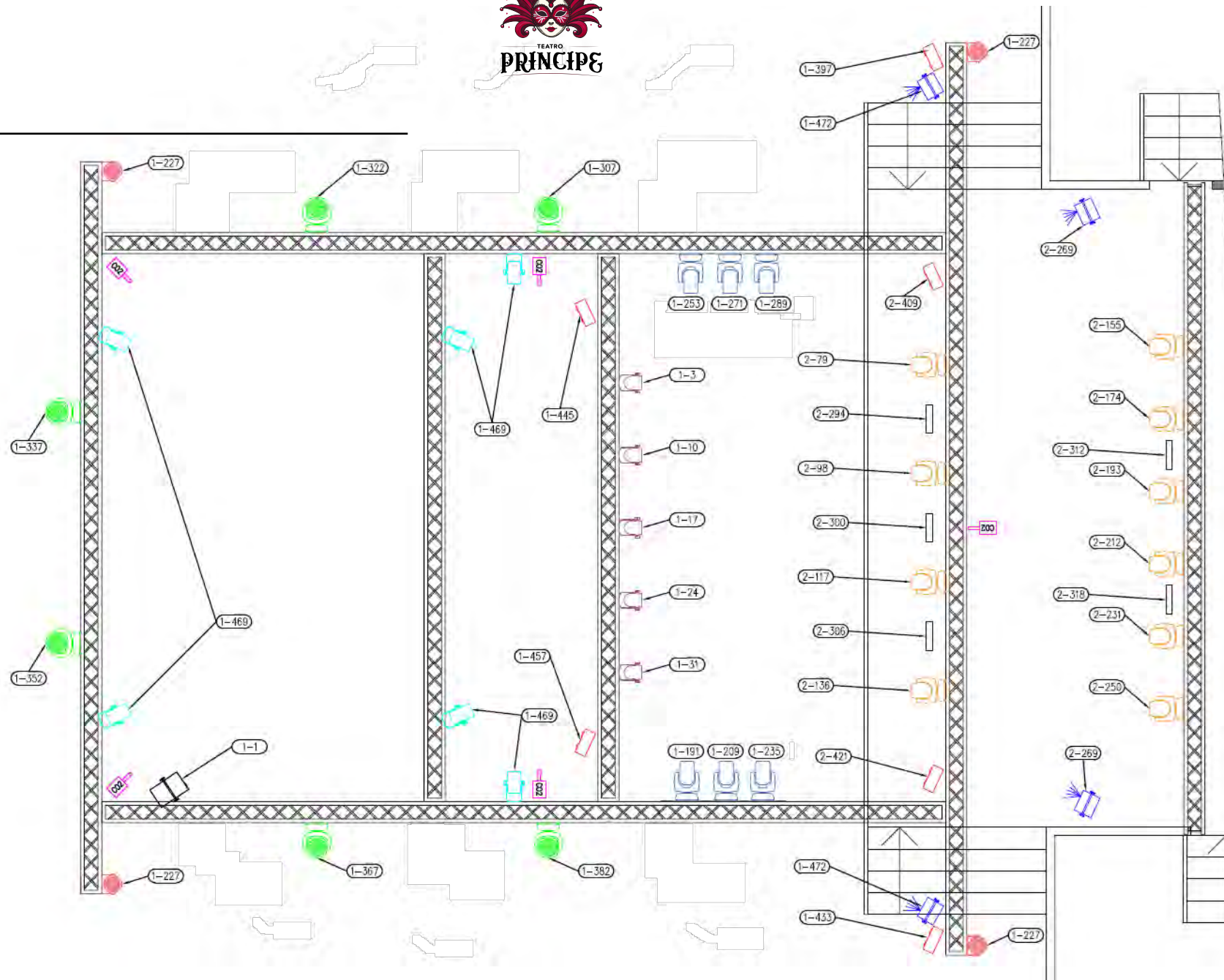
The entire lighting rig is controlled via Artnet through a touch screen computer that manages two DMX universes using Chamsys MagicQ software.

## RESIDENT EQUIPMENT:

- 1 Touch Screen Computer (Chamsys)
- 6 LED WASH RGBW Zoom Moving Heads (Dance floor)
- 6 LED BEAM Moving Heads (Dance floor)
- 10 LED BEAM Moving Heads (Stage Backlight)
- 6 LED UV Wood Cannon
- 4 Laser
- 6 LED Blinders White-Warm White.
- 5 LED PARs RGBW (Stage)
- 5 WildWash Strobe LED
- LED strips RGB
- Smoke Machine 1500W



# LIGHTS PLOT







# PATCH

Model	Manufacturer	Mode	DMX	Position	note
18x10LEDPar	China	8ch	01-227	TRUSS COLUMN	
4x100WCOBBlind	China	12ch	01-397		
4x100WCOBBlind	China	12ch	01-433		
4x100WCOBBlind	China	12ch	01-445		
4x100WCOBBlind	China	12ch	01-457		
4x100WCOBBlind	China	12ch	02-409		
4x100WCOBBlind	China	12ch	02-421		
Co2 Cannon		1ch	02-324		NOT USABLE
Co2 Jet RGB		8ch	01-500		NOT USABLE
Generic Laser	China	25ch	01-472		
Generic Laser	China	25ch	02-269		
HeroBeam100	Varytec	19ch	02-079		
HeroBeam100	Varytec	19ch	02-098		
HeroBeam100	Varytec	19ch	02-117		
HeroBeam100	Varytec	19ch	02-136		
HeroBeam100	Varytec	19ch	02-155		
HeroBeam100	Varytec	19ch	02-174		
HeroBeam100	Varytec	19ch	02-193		
HeroBeam100	Varytec	19ch	02-212		
HeroBeam100	Varytec	19ch	02-231		
HeroBeam100	Varytec	19ch	02-250		
LED RGBW	Generic	4ch	02-001	ENTRANCE PAR	KEEP ALWAYS ON, ANY COLOR
LedBeam200	Generic	18ch	01-191		
LedBeam200	Generic	18ch	01-209		
LedBeam200	Generic	18ch	01-235		
LedBeam200	Generic	18ch	01-253		
LedBeam200	Generic	18ch	01-271		
LedBeam200	Generic	18ch	01-289		
LEDRGB	Generic	3ch	02-007	MAINROOM LED STRIP	
LEDRGB	Generic	3ch	02-010	MAINROOM LED STRIP	
LEDRGB	Generic	3ch	02-013	MAINROOM LED STRIP	
LEDRGB	Generic	3ch	02-016	MAINROOM LED STRIP	
LEDRGB	Generic	3ch	02-019	MAINROOM LED STRIP	
LEDRGB	Generic	3ch	02-022	MAINROOM LED STRIP	

Model	Manufacturer	Mode	DMX	Position	note
LEDRGB	Generic	3ch	02-025	HALLWAY LED STRIP	KEEP ALWAYS ON, WARM WHITE
LEDRGB	Generic	3ch	02-028	BAR LED STRIP	KEEP ALWAYS ON, ANY COLOR
LEDRGB	Generic	3ch	02-031	BAR LED STRIP	KEEP ALWAYS ON, ANY COLOR
LEDRGB	Generic	3ch	02-034	MAINROOM LED STRIP	
LEDRGB	Generic	3ch	02-037	MAINROOM LED STRIP	
LEDRGB	Generic	3ch	02-040	HALLWAY LED STRIP	KEEP ALWAYS ON, WARM WHITE
LEDRGB	Generic	3ch	02-043	HALLWAY LED STRIP	KEEP ALWAYS ON, WARM WHITE
LEDRGB	Generic	3ch	02-046	HALLWAY LED STRIP	KEEP ALWAYS ON, WARM WHITE
LEDRGB	Generic	3ch	02-049	HALLWAY LED STRIP	KEEP ALWAYS ON, WARM WHITE
LEDRGB	Generic	3ch	02-052	BAR LED STRIP	KEEP ALWAYS ON, ANY COLOR
LEDRGB	Generic	3ch	02-055	BAR LED STRIP	KEEP ALWAYS ON, ANY COLOR
LEDRGB	Generic	3ch	02-058	HALLWAY LED STRIP	KEEP ALWAYS ON, WARM WHITE
LEDRGB	Generic	3ch	02-061	HALLWAY LED STRIP	KEEP ALWAYS ON, WARM WHITE
LEDRGB	Generic	3ch	02-064	HALLWAY LED STRIP	KEEP ALWAYS ON, WARM WHITE
LEDRGB	Generic	3ch	02-067	HALLWAY LED STRIP	KEEP ALWAYS ON, WARM WHITE
LEDRGB	Generic	3ch	02-070	HALLWAY LED STRIP	KEEP ALWAYS ON, WARM WHITE
LEDRGB	Generic	3ch	02-073	HALLWAY LED STRIP	KEEP ALWAYS ON, WARM WHITE
LEDRGB	Generic	3ch	02-076	HALLWAY LED STRIP	KEEP ALWAYS ON, WARM WHITE
LedZoom36x15	China	15ch	01-307		
LedZoom36x15	China	15ch	01-322		
LedZoom36x15	China	15ch	01-337		
LedZoom36x15	China	15ch	01-352		
LedZoom36x15	China	15ch	01-367		
LedZoom36x15	China	15ch	01-382		
MiniStudioPAR1	Ignition	7ch	01-003		
MiniStudioPAR1	Ignition	7ch	01-010		
MiniStudioPAR1	Ignition	7ch	01-017		
MiniStudioPAR1	Ignition	7ch	01-024		
MiniStudioPAR1	Ignition	7ch	01-031		
Smoke	Generic	1ch	01-001		FIRE PREVENTION SYSTEM ON, LOW USAGE OF SMOKE
UVCCannon	American DJ	3ch	01-469		
Wild Wash	Stairville	6ch	02-294		
Wild Wash	Stairville	6ch	02-300		
Wild Wash	Stairville	6ch	02-306		
Wild Wash	Stairville	6ch	02-312		
Wild Wash	Stairville	6ch	02-318		



## STAGE DIMENSIONS

